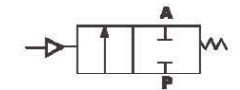




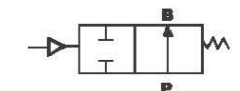
**2/2-way Angle-Seat Valve  
Pneumatically Operated, for  
medium up to +180° C, with Weld ends  
port connection DN 10-80**

- High flow rate;
- Long life cycle;
- NC and NO universal actuators with modular universal accessory program up to control heads;
- Deliverable with flow direction below or above seat
- Simple conversion of the circuit function.

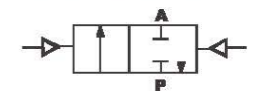
**Symbol** **Control function A**  
(closed by spring force  
in rest position)



**Control function B**  
(open in rest position)



**Control function I**  
(double-acting actuator)



◆ **How to Order**



PV300P025NCS x63



PV300S025NCS

PV300 P 015 NC S x 63mm

**Acting type**

S	Single acting	D	Double acting
---	---------------	---	---------------

**Body Material**

Blank	S.S 304 (standard)
4	S.S 316
5	S.S 316L

**Type of actuation**

NO	Normally open
NC	Normally closed (standard)

**Nominal diameter**

15	G1/2	20	G3/4
25	G1	32	G1 1/4
40	G1 1/2	50	G2
65	G2 1/2		

**Actuator Material code**

P	Plastic Actuator
S	S.S. Actuator
A	Aluminium Actuator

**Model**

PV300	300 series Angle Seat Valve
-------	-----------------------------

◆ **Actuator Size**

Port Size	Standard Actuator Size mm		
	PA	S.S.	AL
DN15	40,50	40,50	40,50
DN20	50,63,80	50,63,90	50,63,80
DN25	50,63,80	50,63,90	50,63,80
DN32	63,80	63,90	63,80
DN40	63,80	63,90	63,80
DN50	63,80	63,90	63,80
DN65	80,100	90,125	80,100

- ◆ PV300 Series Plunger Pilot angle seat valve is propelled by piston actuator, either single acting or double acting. Actuators are made of three different materials, applicable to different working temperature:

2/2 Way stainless steel valve with big flow capacity

V type seals ensure reliable and effective sealing

Maintenance free, compatible with various accessories,

Direction indicating, stroke limiting or manual switching can be achieved conveniently.

**Weld Ends,**  
2/2-way stainless steel Angle Seat Valve with big flow capacity,  
Pneumatically Operated, Excellent seat tightness due to PTFE soft sealing,  
for Medium up to +180°C, Port connection DN 15-65