



2/2-way Angle-Seat Valve Pneumatically Operated, for medium up to +180° C, with Tri-Clamp Ends port connection DN 15 - 65

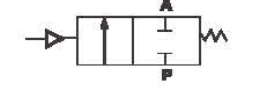
- High flow rate;
- Long life cycle;
- NC and NO universal actuators with modular universal accessory program up to control heads;
- Deliverable with flow direction below or above seat
- Simple conversion of the circuit function.

◆ How to Order

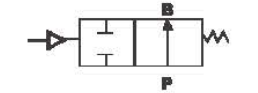


PV500 P 015 NC S x 63mm

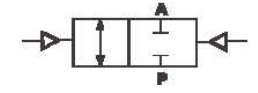
Symbol **Control function A**
(closed by spring force in rest position)



Control function B
(open in rest position)



Control function I
(double-acting actuator)



| | | | |
|-------------------------------|-----------------------------|------------|---------------|
| Acting type | | | |
| S | Single acting | D | Double acting |
| Body Material | | | |
| Blank | S.S 304 | (standard) | |
| 4 | S.S 316 | | |
| 5 | S.S 316L | | |
| Type of actuation | | | |
| NO | Normally Open | | |
| NC | Normally Closed (standard) | | |
| Port code | | | |
| | 15 | G1/2 | |
| 20 | G3/4 | 25 | G1 |
| 32 | G1 1/4 | 40 | G1 1/2 |
| 50 | G2 | 65 | G2 1/2 |
| Actuator Material code | | | |
| P | Plastic Actuator | | |
| S | S.S. Actuator | | |
| A | Aluminium Actuator | | |
| Model | | | |
| PV500 | 500 series Angle Seat Valve | | |

◆ **Clamp specification** :ISO 2852-1993
ISO/JIS is also available

◆ **PV500 Series Plunger Pilot angle seat valve is propelled by a piston actuator, either single acting or double acting. Actuators are made of three different materials, applicable to different working temperature:**

2/2 Way stainless steel valve with big flow capacity
V type seals ensure reliable and effective sealing
Maintenance free, compatible with various accessories,
Direction indicating, stroke limiting or manual switching can be achieved conveniently.

◆ Actuator Size

| Port Size | Standard Actuator Size mm | | |
|-----------|---------------------------|----------|----------|
| | PA | S.S. | AL |
| DN15 | 40,50 | 40,50 | 40,50 |
| DN20 | 50,63,80 | 50,63,90 | 50,63,80 |
| DN25 | 50,63,80 | 50,63,90 | 50,63,80 |
| DN32 | 63,80 | 63,90 | 63,80 |
| DN40 | 63,80 | 63,90 | 63,80 |
| DN50 | 63,80 | 63,90 | 63,80 |
| DN65 | 80,100 | 90,125 | 80,100 |

Tri-Clamp Ends
2/2-way stainless steel Angle Seat Valve with big flow capacity, Pneumatically Operated, Excellent seat tightness due to PTFE soft sealing, for Medium up to +180°C, Port connection DN 15-65.