

Angle Seat Valve(Piston Valve) Series PV100 (Threaded Ends)

2/2-way Angle-Seat Valve Pneumatically Operated, for medium up to +180° C, threaded port connection DN 10-80

- High flow rate;
- Long life cycle;
- NC and NO universal actuators with modular universal accessory program up to control heads;
- Deliverable with flow direction below or above seat
- Simple conversion of the circuit function.

◆ How to Order



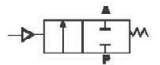
PV100S025NCS



PV100P040NCS

PV100 P 015 NC S x 63mm

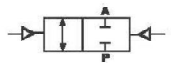
Symbol **Control function A**
(closed by spring force
in rest position)



Control function B
(open in rest position)



Control function I
(double-acting actuator)



Acting type

S	Single acting	D	Double acting
---	---------------	---	---------------

Body Material

Blank	S.S 304	(standard)
4	S.S 316	
5	S.S 316L	

Control Function

NO	Normally open
NC	Normally closed (standard)

Nominal diameter

10	G3/8	15	G1/2
20	G3/4	25	G1
32	G1 1/4	40	G1 1/2
50	G2	65	G2 1/2
80	G3		

Actuator Material code

P	PA Actuator
S	S.S. Actuator
A	Aluminium Actuator

Model

PV100	100 seires Angle Seat Valve
-------	-----------------------------

◆ Actuator Size

Port Size	Standard Actuator Size mm		
	PA	S.S.	AL
DN10	40,50	40,50	40,50
DN15	40,50	40,50	40,50
DN20	50,63,80	50,63,90	50,63,80
DN25	50,63,80	50,63,90	50,63,80
DN32	63,80	63,90	63,80
DN40	63,80	63,90	63,80
DN50	63,80	63,90	63,80
DN65	80,100	90,125	80,100
DN80	100	125	100
DN100	125	125	125

- ◆ PV100 Series Plunger Pilot angle seat valve is propelled by piston actuator, either single acting or double acting. Actuators are made of three different materials, applicable to different working temperature:
- 2/2 Way stainless steel valve with big flow capacity
- V type seals ensure reliable and effective sealing
- Maintenance free, compatible with various accessories,
- Direction Indicating, stroke limiting or manual switching can be achieved conveniently.

Threaded Ends ,
2/2-way stainless steel Angle Seat Valve with big flow capacity, Pneumatically Operated,
Excellent seat tightness due to PTFE soft sealing ,
for Medium up to +180°C, Port connection DN 10-80