

# RADIAL / ANGULAR

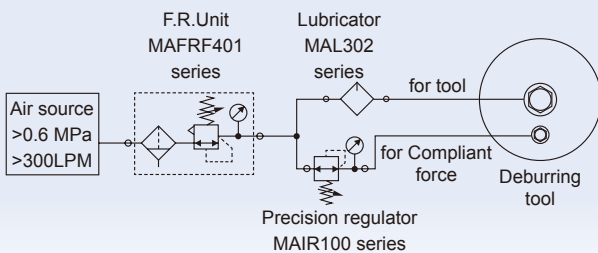
## COMPLIANT DEBURRING TOOL FOR ROBOT



Model	TRG20	TRG30	TRF20	TAF20
Compliant type	Radial	Radial	Radial	Angular
Applications	Curved edge	Curved edge	Curved edge	Straight edge
Burr size	S, M	L	S	S
Tool	Cutter	Cutter	Round file	File
Workpiece type	Plastic, die-casting	Plastic, die-casting	Die-casting	Die-casting

### Suggested circuit diagram

Prepare a suitable air source as illustrated below.

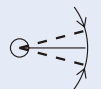


### Compliant type

For different application requirements, there are two types of floats to choose from.

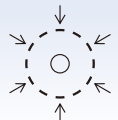
#### Angular

Floating in an angular direction. Allow lateral tolerance and position change. Suitable for straight line or plane deburring.



#### Radial

Floating in a radial direction. Allow radial tolerance or position change. Suitable for complex contour deburring.



### Application of workpiece

- The contact force to the edge of the workpiece can be set. (Please refer to the manual for details)
- Improve work efficiency and workpiece quality.



< Die-casting workpiece >



(Cutter is not attached)

### Order example

**TRG20**

MODEL

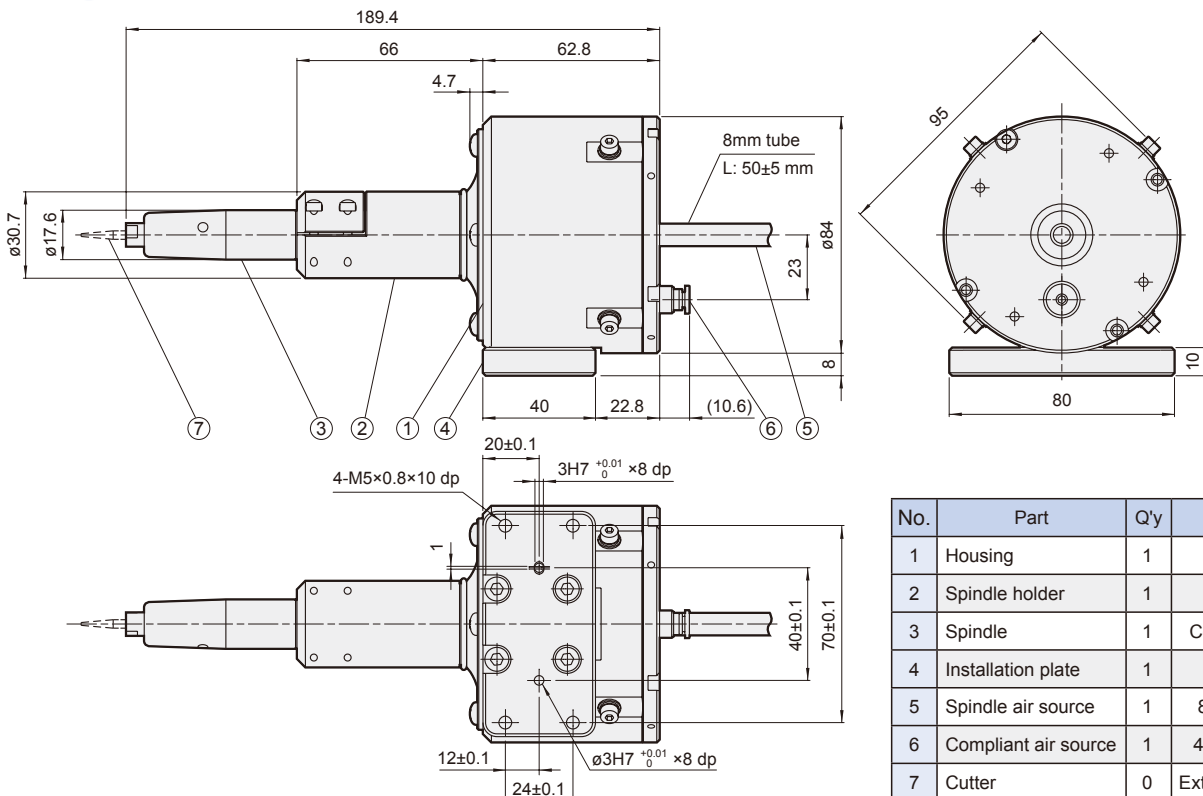
### Feature

- Used to remove the smallest burrs on curved edges.
- Suitable for plastic, die-casting and machined workpieces.

### Specification

Model	TRG20
Compliant angle (°)	3.5 (radial)
Compliant force (N)	2-10
Nominal operating pressure (MPa)	Compliant force: 0.1-0.5 Spindle: 0.6
Air source requirement	> 0.6 MPa, clean, dry, filtered ≤ 5µm
Air consumption (LPM)	Compliant force: neglectable Spindle: 150
Oil consumption (drops/min)	1-2 (for the spindle only, do not lubricate the compliant part)
Spindle type	Vane motor
Spindle idle speed (RPM)	65000
Cutter shank diameter (mm)	3
Ambient temperature (°C)	+5~+35
Ambient moisture (%)	< 95
Weight (kg)	1.2

\* Please contact our sales department when the product requires to be repaired and replacement of consumables. Unauthorized disassembly will void the warranty.



No.	Part	Q'y	Note
1	Housing	1	-
2	Spindle holder	1	-
3	Spindle	1	Consumable
4	Installation plate	1	-
5	Spindle air source	1	8 mm tube
6	Compliant air source	1	4 mm fitting
7	Cutter	0	Extra purchase

### Feature

- Used to remove the thicker burrs on curved edges.
- Suitable for plastic, die-casting and machined workpieces.

### Specification

Model	TRG30
Compliant angle (°)	3.5 (radial)
Compliant force (N)	6-30
Nominal operating pressure (MPa)	Compliant force: 0.1-0.5 Spindle: 0.6
Air source requirement	> 0.6 MPa, clean, dry, filtered ≤ 5μm
Air consumption (LPM)	Compliant force: neglectable Spindle: 350
Oil consumption (drops/min)	1-2 (for the spindle only, do not lubricate the compliant part)
Spindle type	Vane motor
Spindle idle speed (RPM)	25000
Cutter shank diameter (mm)	6
Ambient temperature (°C)	+5~+35
Ambient moisture (%)	< 95
Weight (kg)	2.9



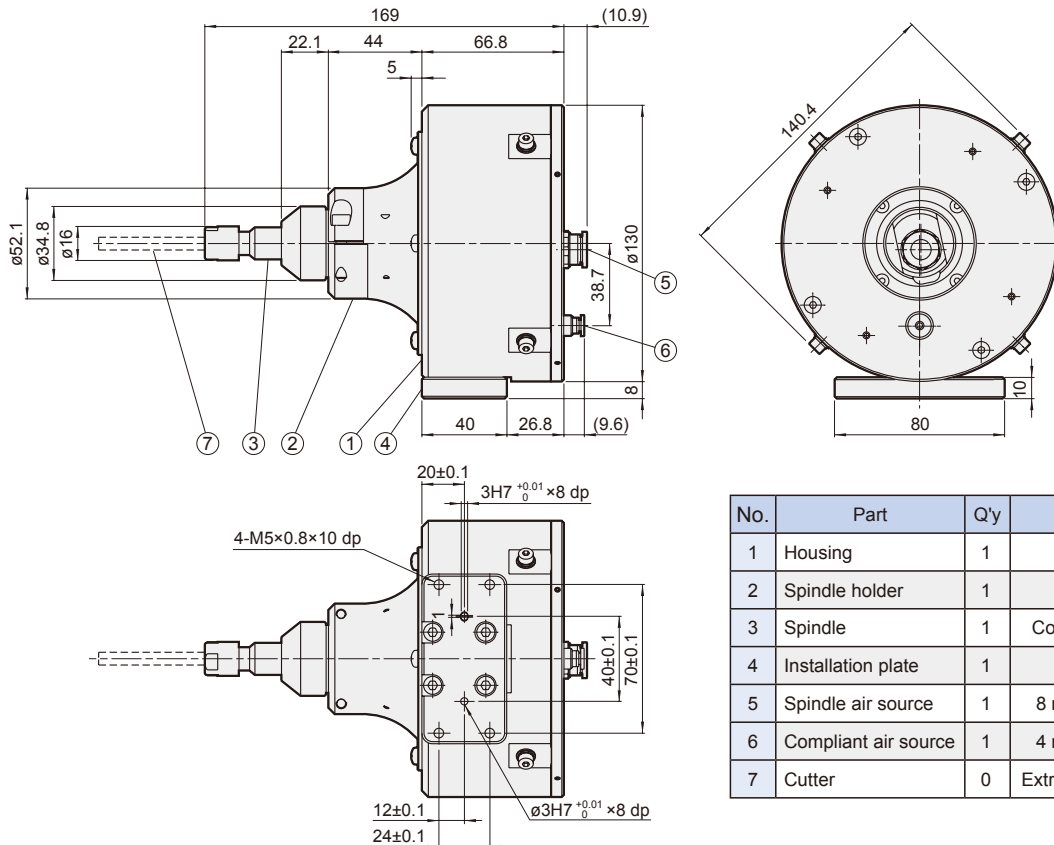
(Cutter is not attached)

### Order example

TRG30

MODEL

\* Please contact our sales department when the product requires to be repaired and replacement of consumables. Unauthorized disassembly will void the warranty.





(File is not attached)

### Feature

- Used to remove the smallest burrs on curved edges.
- Suitable for die-casting and machined workpieces.

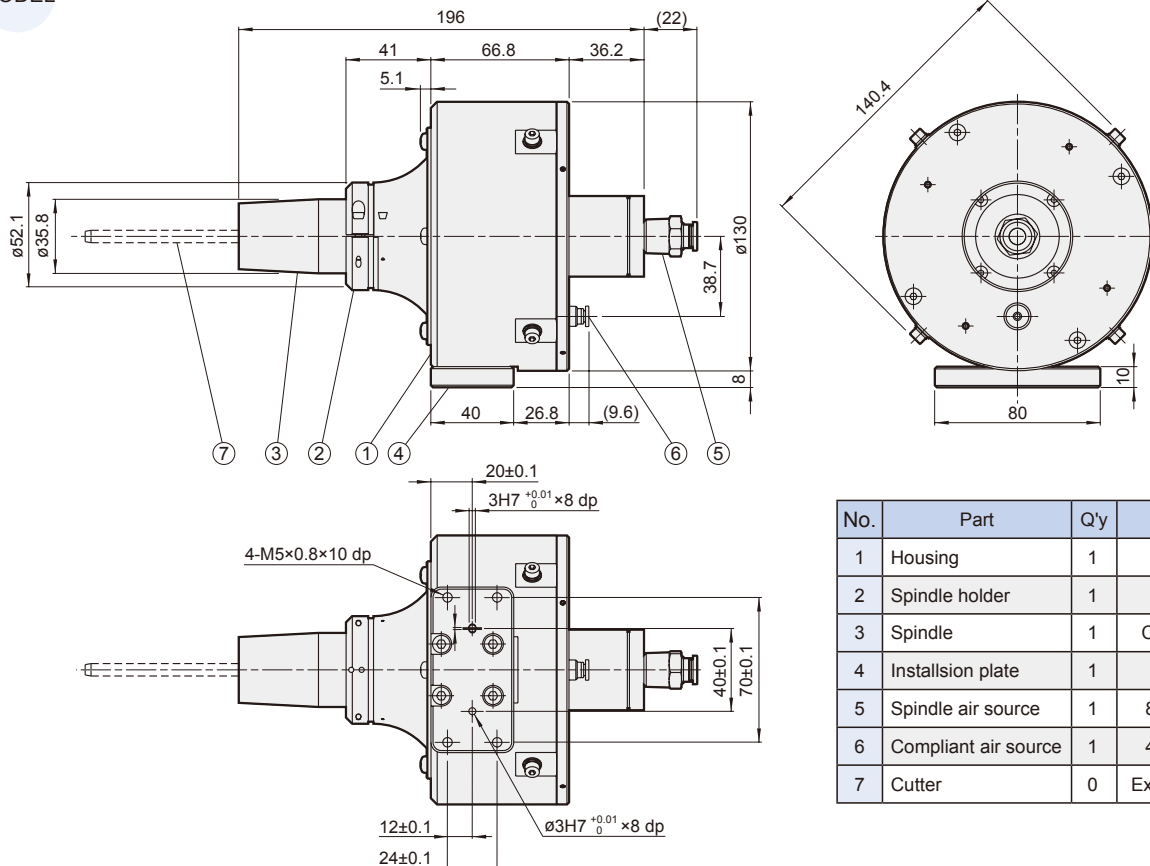
### Specification

Model	TRF20
Compliant angle (°)	3.5 (radial)
Compliant force (N)	5-30
Nominal operating pressure (MPa)	Compliant force: 0.1-0.5 Pneumatic file: 0.6
Air source requirement	> 0.6 MPa, clean, dry, filtered ≤ 5μm
Air consumption (LPM)	Compliant force: neglectable Pneumatic file: 170
Oil consumption (drops/min)	1-2 (for the pneumatic file only, do not lubricate the compliant part)
File idle frequency (BPM)	9000
File stroke (mm)	10
File shank diameter (mm)	5
Ambient temperature (°C)	+5~+35
Ambient moisture (%)	< 95
Weight (kg)	2.9

### Order example

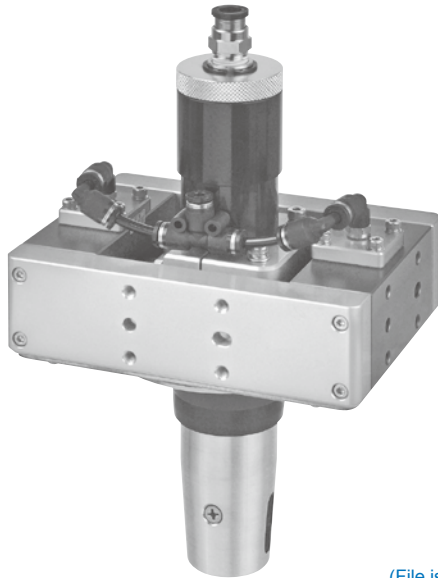
TRF20

MODEL



\* Please contact our sales department when the product requires to be repaired and replacement of consumables. Unauthorized disassembly will void the warranty.

No.	Part	Q'y	Note
1	Housing	1	-
2	Spindle holder	1	-
3	Spindle	1	Consumable
4	Installsion plate	1	-
5	Spindle air source	1	8 mm fitting
6	Compliant air source	1	4 mm fitting
7	Cutter	0	Extra purchase



(File is not attached)

### Feature

- Used to remove the smallest burrs on straight edges.
- Suitable for die-casting workpieces.

### Specification

Model	TAF20
Compliant angle (°)	±5.5 (planary)
Compliant force (N)	4-20
Nominal operating pressure (MPa)	Compliant force: 0.1-0.5 Pneumatic file: 0.6
Air source requirement	> 0.6 MPa, clean, dry, filtered ≤ 5µm
Air consumption (LPM)	Compliant force: neglectable Pneumatic file: 170
Oil consumption (drops/min)	1-2 (for the pneumatic file only, do not lubricate the compliant part)
File idle frequency (BPM)	9000
File stroke (mm)	10
File shank diameter (mm)	5
Ambient temperature (°C)	+5~+35
Ambient moisture (%)	<95
Weight (kg)	1.7

### Order example

TAF20

MODEL

\* Please contact our sales department when the product requires to be repaired and replacement of consumables. Unauthorized disassembly will void the warranty.

No.	Part	Q'y	Note
1	Housing	1	-
2	Pneumatic file	1	Consumable
3	File air source	1	8 mm fitting
4	Compliant air source	1	4 mm fitting
5	File	0	Extra purchase

